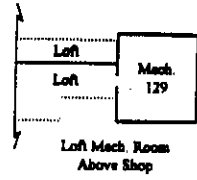
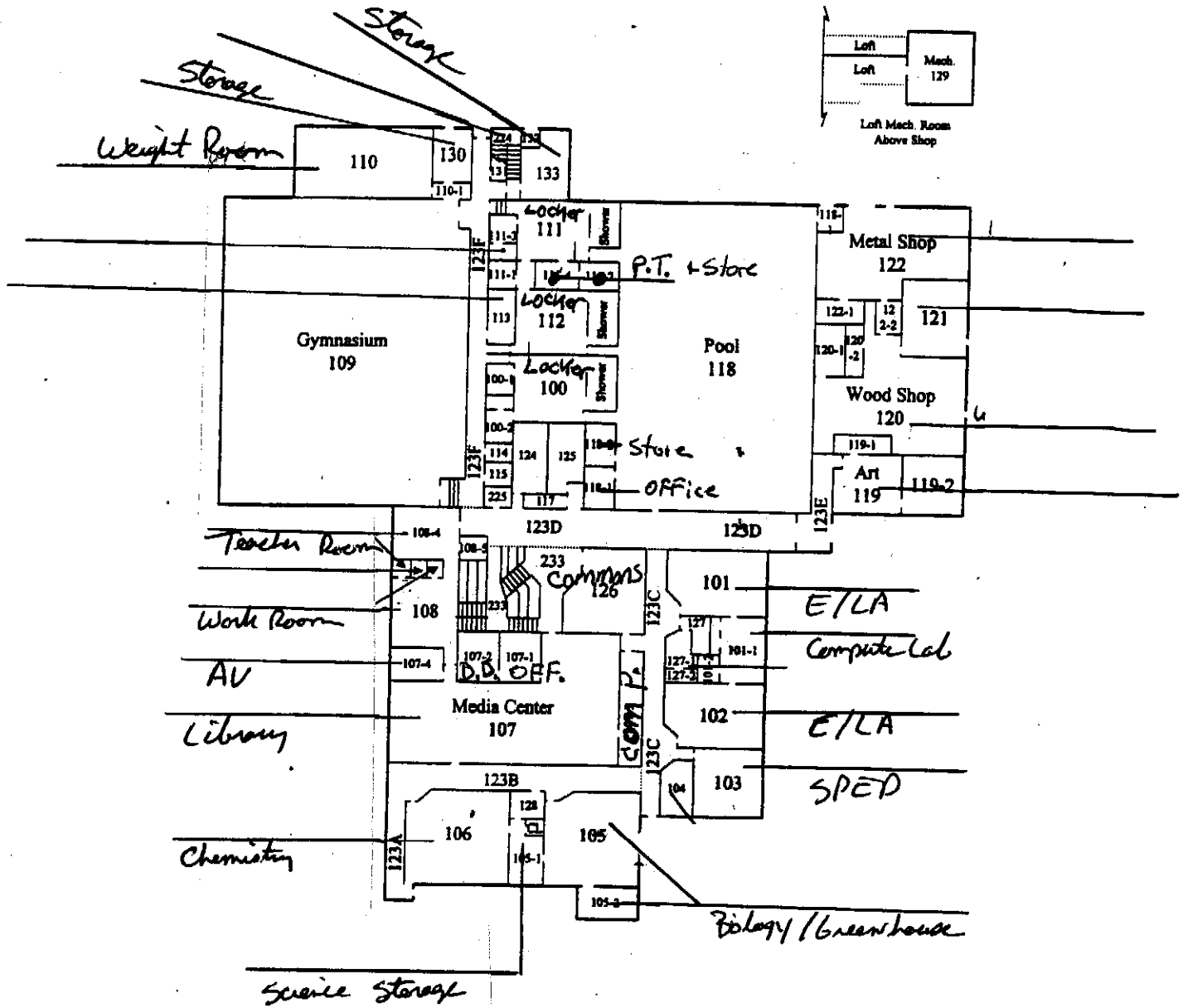


Emergency Response Area Layout #2

Seward High
Lower



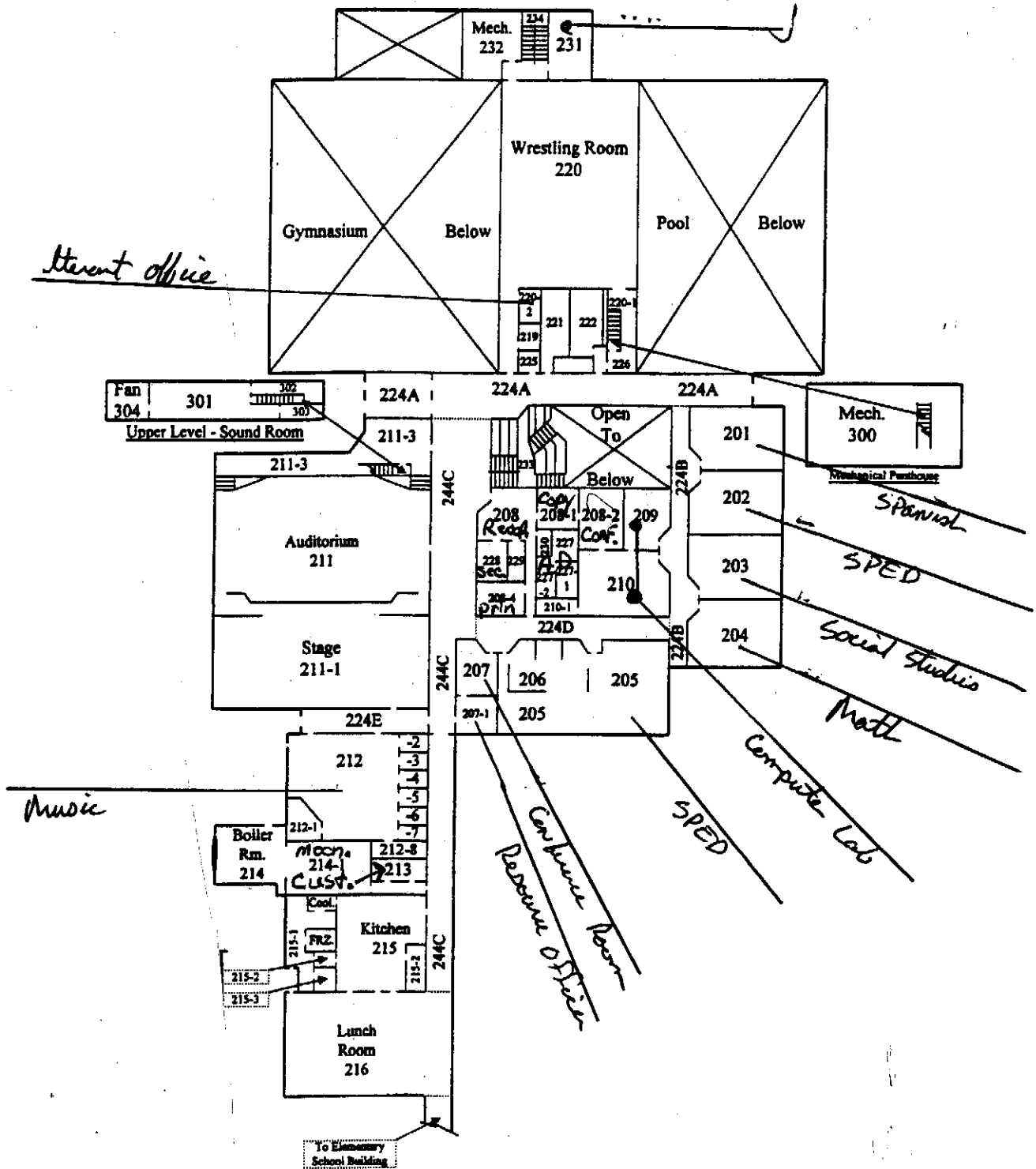
NOTE: Drawing is Not To Scale

KENAI PENINSULA BOROUGH - MAINTENANCE DEPARTMENT
47140 East Poppy Lane, Soldotna, Alaska 99689

SEWARD HIGH SCHOOL - Basic Lower Level Floor Plan
By: MGM Revised: 2-18-07

Emergency Response Area Layout #1

*Seward High
Upper*



NOTE: Drawing Is Not To Scale.

KENAI PENINSULA BOROUGH - MAINTENANCE DEPARTMENT
47140 East Poppy Lane, Soldotna, Alaska 99689

SEWARD HIGH SCHOOL - Basic Upper Level Floor Plan

By: MGM

Revised: 2 - 18 - 97 Drawing 2 of 2